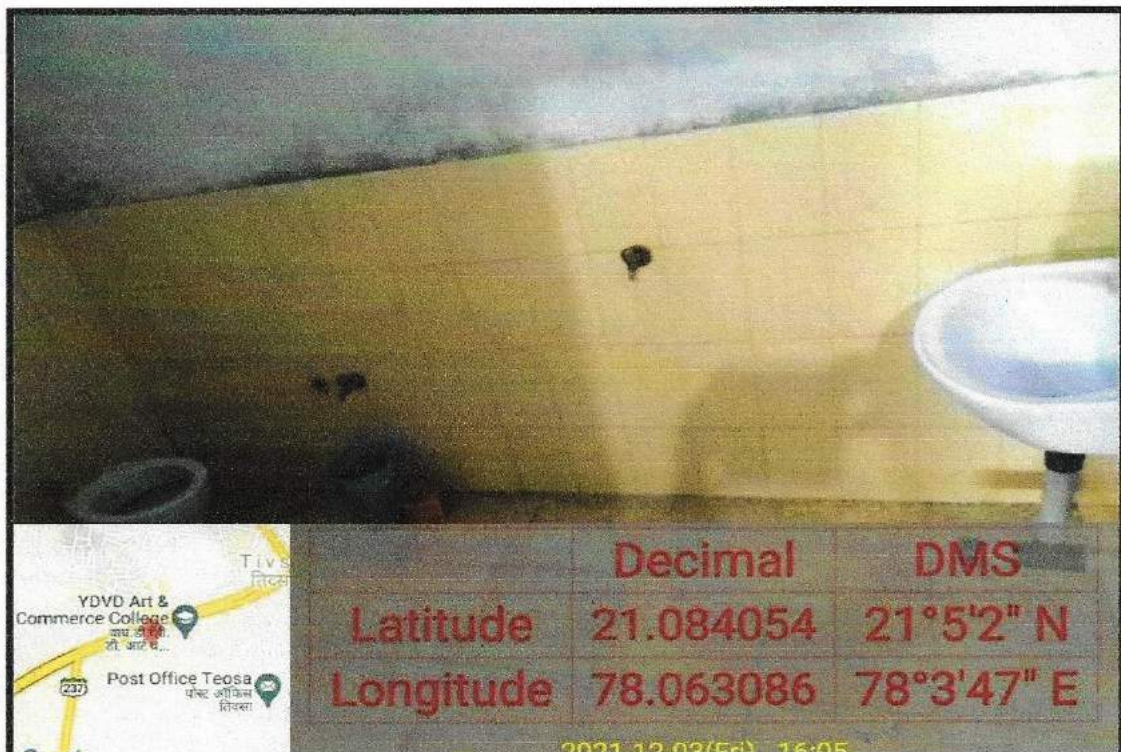
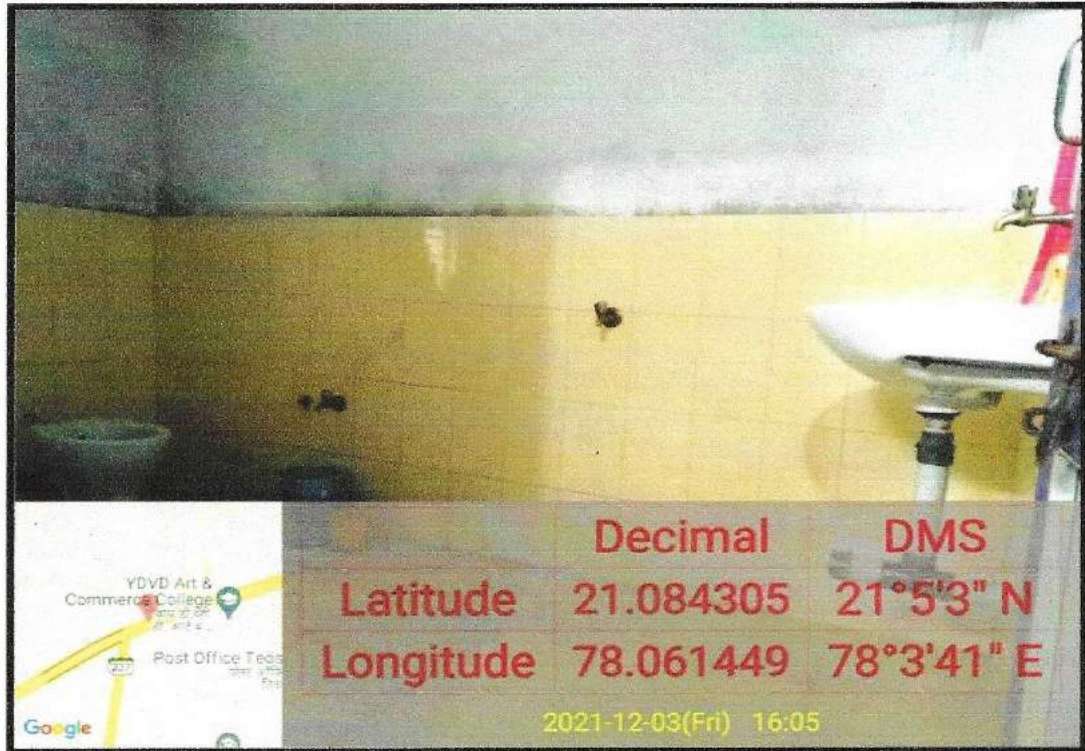


Shri Shivaji Education Society, Amravati's  
**Y.D.V.D. Arts, Commerce College, Teosa. Dist-Amravati**

**Wash Room for Disable Students**



*[Signature]*  
**Principal**  
Y.D.V.D Arts, Commerce  
College, Teosa, Dist. Amravati





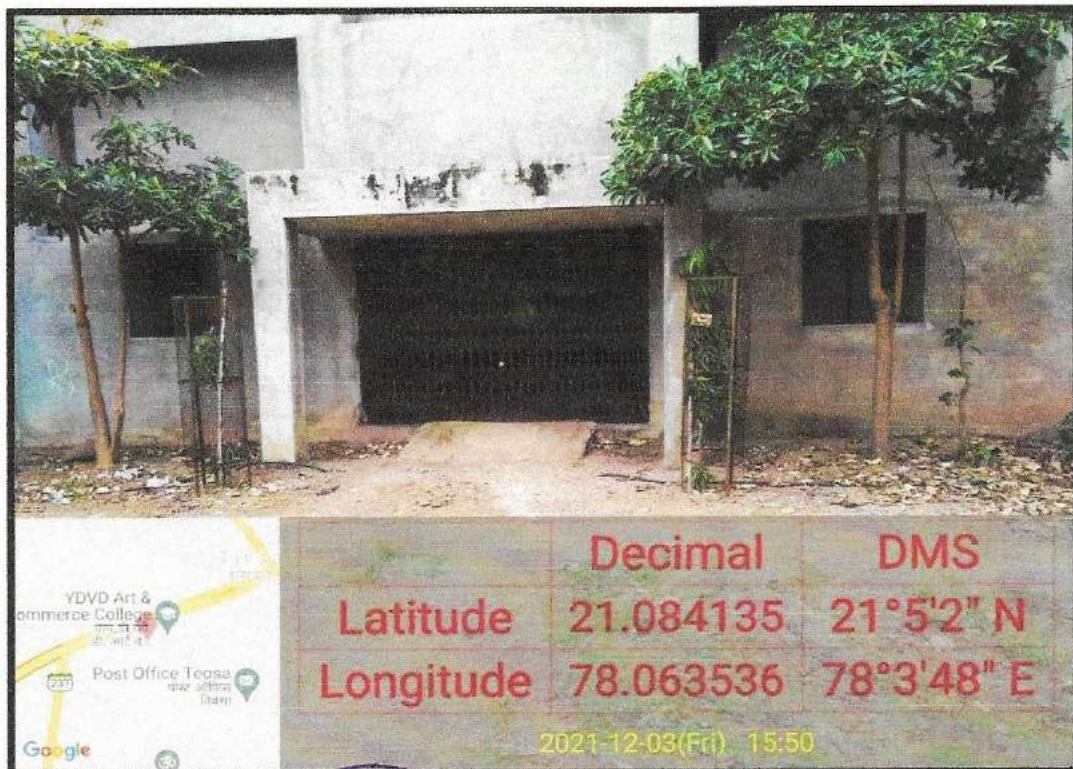
  
**Principal**  
 Y.D.V.D. Arts, Commerce  
 College, Teosa, Dist, Amravati



### Ramp in Front of Home Economics Department



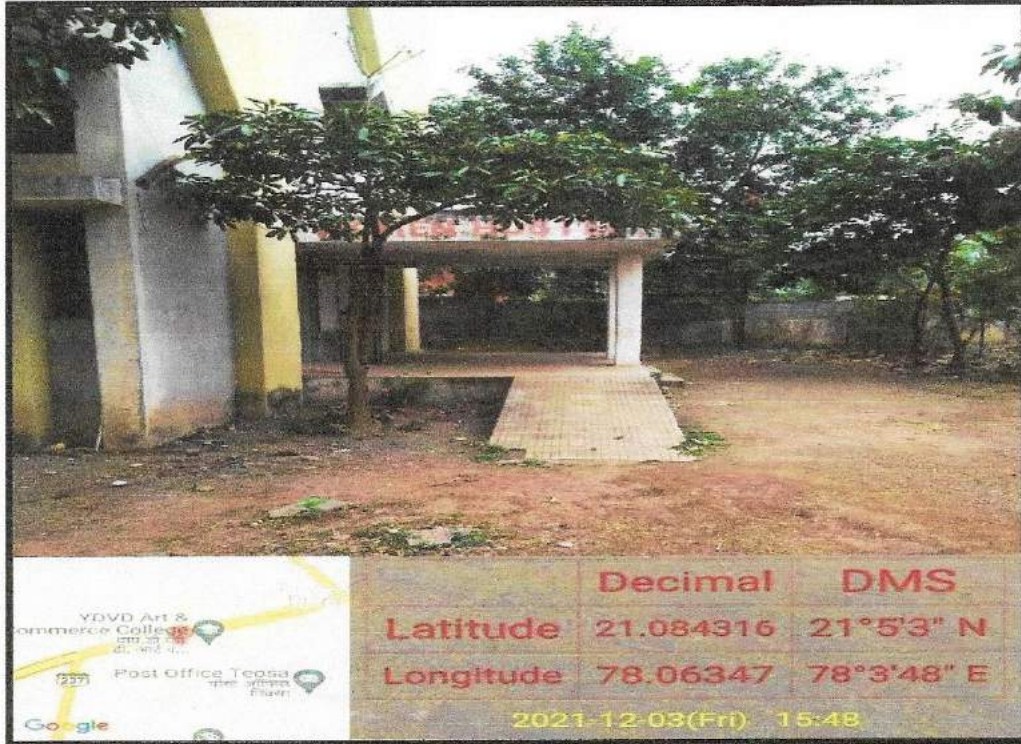
### Ramp in Front of Indore Stadium



*[Signature]*  
**Principal**  
Y.D.V.D Arts, Commerce  
College, Teosa, Dist. Amravati



## Ramp to Disable Friendly Washroom



## Ramp to Class Room



*[Signature]*  
Principal  
Y.D.V.D Arts, Commerce  
College, Teosa, Dist. Amravati



### Ramp to Administrative Office

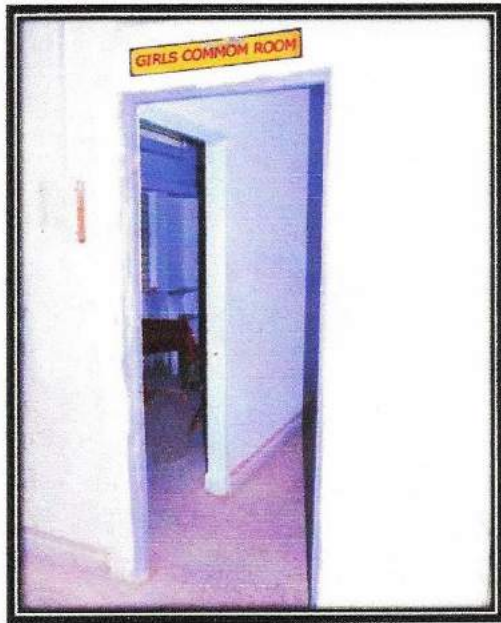


### Ramp to Administrative Office from Class Room



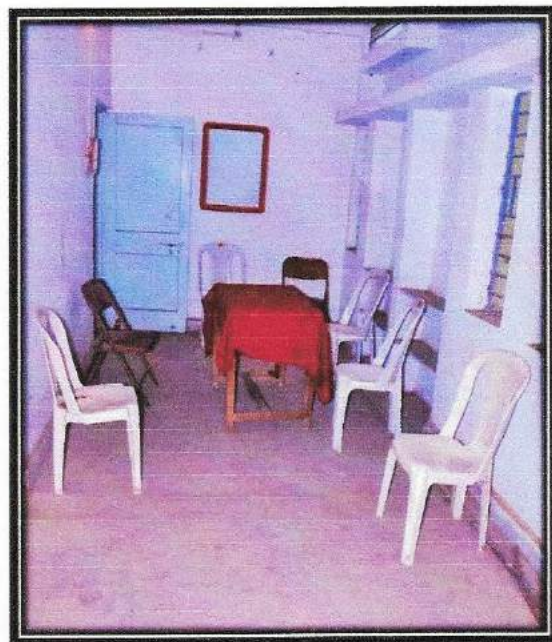
*[Signature]*  
**Principal**  
 Y.D.V.D. Arts Commerce  
 College, Teosa, Dist. Amravati

## Common Room and Rest room for Disable Students



**Girls Common Room**

**Rest Room**



  
**Principal**  
Y.D.V. Arts, Commerce  
College, Teosa, Dist. Amravati



**Shri Shivaji Education Society, Amravati's**  
**Y.D.V.D. Arts, Commerce College, Teosa. Dist-Amravati**

**2.2.3.Percentage of differently able students (Divyangjan) on rolls**

Sr.No.	Name of the students enrolled under differently abled category	Gender	UDID card number	Type of disability	Program enrolled	Year of enrolment
1	Lakhe Mayuri Vilas	Female	84921	Hearing Impairment	B.A. II	2018-19
2	Mundre Shrutika Devendra	Female	63647	Visual Impairment	B.A-I	2018-19



**Principal**  
Y.D.V.D Arts, Commerce  
College, Teosa, Dist. Amravati